

Staff Detail Report

Date of Survey: 2018-12-01 To 2019-02-28

Report Level: Data for LEA - Deer Lakes SD

Total Number of Respondents: 122 Filtered Count: 122

[print](#)

TABLE 1	
Agreeable to... (GREEN) 3.4 and above Contradiction to... (Red) 2.5 and below	
a. Total Average School Climate Score	2.95
b. Social Emotional Learning Average Domain Score	2.48
c. Student Support Average Domain Score	3.21
d. High Expectations/Academic/Challenge Average Domain Score	3.15
e. Safe School Climate Average Domain Score	3.03

Question	Results
What is your role in this school?	
Administrator	4 3.3%
Classroom Teacher	97 79.5%
Other Certified Staff	14 11.5%
Classified Staff	1 0.8%
Other	6 4.9%
At what level do you work? (check all that apply)	
Elementary	59 45.4%
Middle	32 24.6%
High	39 30.0%
District/Administration	0 0.0%

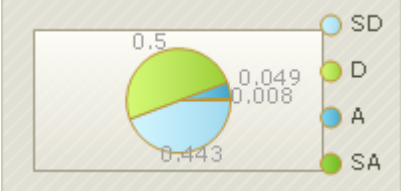
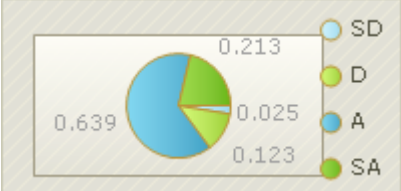

Question	Results
We have a school police or school resource officer (SRO) in our school building:	
Yes	121 99.2%
No	1 0.8%
Not Applicable	0 0.0%
The school police officer plays an important role in keeping our school safe.	
Yes	112 92.6%
No	9 7.4%
Rank how safe you believe your school is because of the school police officer.	
The school(s) is/are just as safe as before the school police/SRO came to the school	14 11.6%
The school(s) is/are somewhat safer as before the school police/SRO came to the school	54 44.6%
The school(s) is/are much safer as before the school police/SRO came to the school	53 43.8%

Staff Detail Report

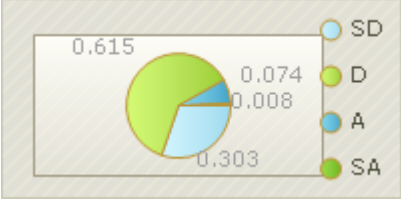
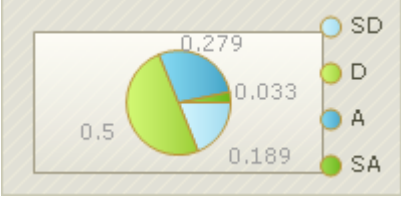
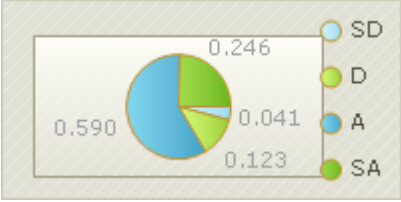
Question	Results
How many years have you worked, in any position, in this school?	
Less than two years	11 9.0%
3 to 5 years	10 8.2%
6 to 10 years	15 12.3%
11 to 15 years	27 22.1%
More than 15 years	59 48.4%
Select the one or more from the categories provided that best match.	
American Indian/Alaskan Native	0 0.0%
Black/African American	0 0.0%
Hispanic	0 0.0%
Asian	0 0.0%
Multi-Racial	0 0.0%
Native Hawaiian or other Pacific Islander	0 0.0%
White/Caucasian	119 97.5%
Unavailable/Unknown/Decline	3 2.5%
Which category best describes your Gender?	
Female	92 75.4%
Male	30 24.6%

Question	Results
How many years have you worked, in any position, in education?	
Less than two years	0.8 0.8%
3 to 5 years	4.9 4.9%
6 to 10 years	7.4 7.4%
11 to 15 years	20.5 20.5%
More than 15 years	66.4 66.4%
What is the primary grade level in which you teach classes	
Kindergarten	7 7.2%
1st Grade	6 6.2%
2nd Grade	4 4.1%
3rd Grade	10 10.3%
4th Grade	7 7.2%
5th Grade	9 9.3%
6th Grade	7 7.2%
7th Grade	8 8.2%
8th Grade	7 7.2%
9th Grade	8 8.2%
10th Grade	11 11.3%
11th Grade	8 8.2%
12th Grade	5 5.2%

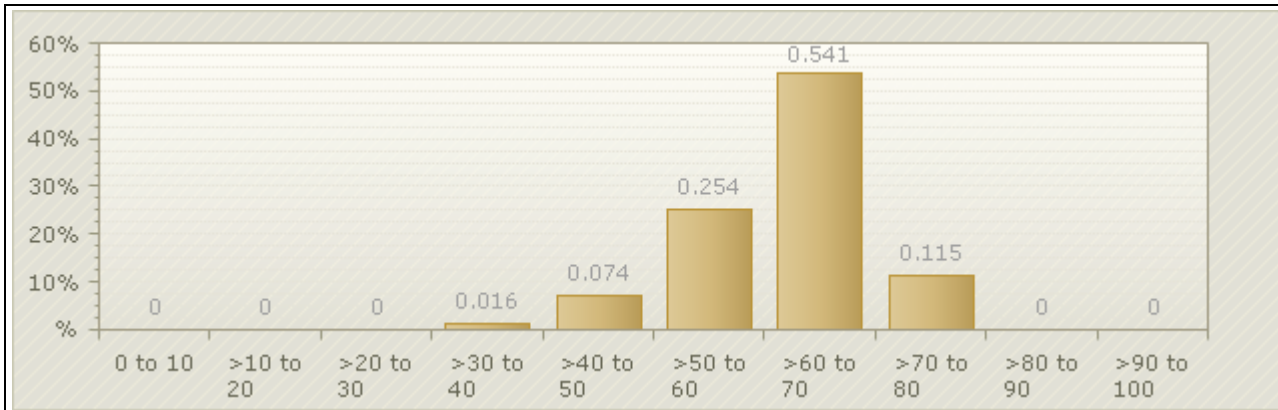
Staff Detail Report

Question	Total Answers	1 Strongly Disagree (SD)	2 Disagree (D)	3 Agree (A)	4 Strongly Agree (SA)	Mean Rating
1. Please indicate how strongly you agree or disagree.						
<p>a. This school is badly affected by crime and violence in the community.</p>  <p><i>* Safe School Climate Domain</i> ** Note: This question has been altered for this report so that the answer reflects the true value of other questions within the report. A disagreement with this question is a positive answer and would skew the total value of the domain.</p>	122	54 44.3%	61 50.0%	6 4.9%	1 0.8%	3.38
<p>b. This school provides positive experiences for parents.</p>  <p><i>* Safe School Climate Domain</i></p>	122	3 2.5%	15 12.3%	78 63.9%	26 21.3%	3.04
<p>c. This school provides a welcoming environment.</p>  <p><i>* Safe School Climate Domain</i></p>	122	3 2.5%	13 10.7%	74 60.7%	32 26.2%	3.11

Staff Detail Report

Question	Total Answers	1 Strongly Disagree (SD)	2 Disagree (D)	3 Agree (A)	4 Strongly Agree (SA)	Mean Rating
<p>d. Students at this school are often threatened.</p>  <p><i>* Safe School Climate Domain</i> ** Note: This question has been altered for this report so that the answer reflects the true value of other questions within the report. A disagreement with this question is a positive answer and would skew the total value of the domain.</p>	122	37 30.3%	75 61.5%	9 7.4%	1 0.8%	3.21
<p>e. Students at this school are often bullied because of certain characteristics (for example, their race, religion, weight, or sexual orientation).</p>  <p><i>* Safe School Climate Domain</i> ** Note: This question has been altered for this report so that the answer reflects the true value of other questions within the report. A disagreement with this question is a positive answer and would skew the total value of the domain.</p>	122	23 18.9%	61 50.0%	34 27.9%	4 3.3%	2.84
<p>f. This school provides a safe environment for teaching and learning.</p>  <p><i>* Safe School Climate Domain</i></p>	122	5 4.1%	15 12.3%	72 59.0%	30 24.6%	3.04

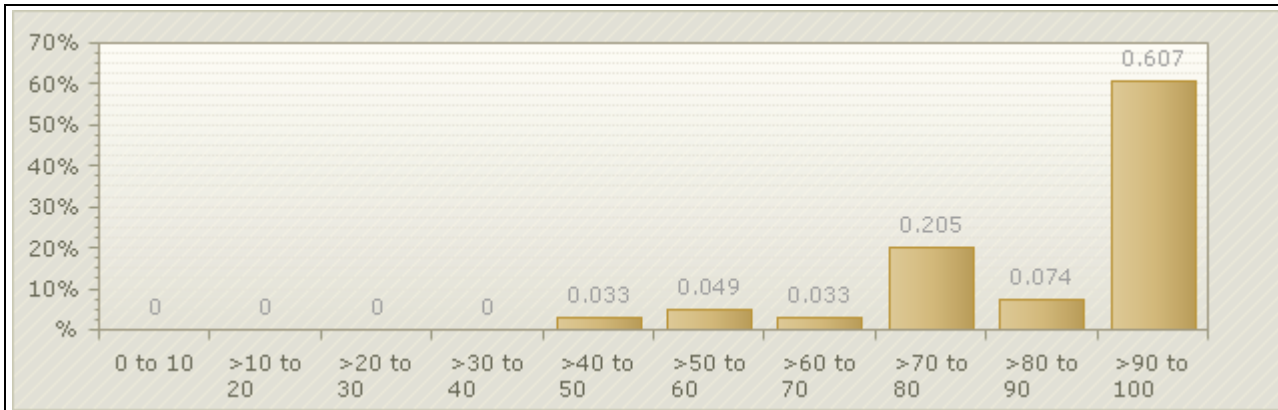
Staff Detail Report



Note: Each respondents collection of answers for the question set above are averaged and plotted into this graph to show how the scores are distributed across the entire collection of respondents. In this specific set '0 to 10' would relate to 'Not Safe' and '>90 to 100' would relate to 'Very Safe'.

Question	Total Answers	1 Not Safe (NS)	2 Somewhat Safe (SS)	3 Mostly Safe (MS)	4 Very Safe (VS)	Mean Rating
2. How safe do you feel:						
a. Outside around the school?						
<i>* Safe School Climate Domain</i>	122	1 0.8%	5 4.1%	43 35.2%	73 59.8%	3.54
b. In the hallways and bathrooms of the school?						
<i>* Safe School Climate Domain</i>	122	2 1.6%	8 6.6%	45 36.9%	67 54.9%	3.45
c. In your classroom or work area?						
<i>* Safe School Climate Domain</i>	122	2 1.6%	7 5.7%	33 27.0%	80 65.6%	3.57

Staff Detail Report



Note: Each respondents collection of answers for the question set above are averaged and plotted into this graph to show how the scores are distributed across the entire collection of respondents. In this specific set '0 to 10' would relate to 'Not Safe' and '>90 to 100' would relate to 'Very Safe'.

Question	Total Answers	1 Strongly Disagree (SD)	2 Disagree (D)	3 Agree (A)	4 Strongly Agree (SA)	Mean Rating
3. How much do you agree with the following statements about students in your school:						
<p>a. Don't really care about each other.</p> <p><i>* Safe School Climate Domain</i> ** Note: This question has been altered for this report so that the answer reflects the true value of other questions within the report. A disagreement with this question is a positive answer and would skew the total value of the domain.</p>	122	26 21.3%	79 64.8%	15 12.3%	2 1.6%	3.06
<p>b. Like to put others down.</p> <p><i>* Safe School Climate Domain</i> ** Note: This question has been altered for this report so that the answer reflects the true value of other questions within the report. A disagreement with this question is a positive answer and would skew the total value of the domain.</p>	122	13 10.7%	72 59.0%	32 26.2%	5 4.1%	2.76

Staff Detail Report

Question	Total Answers	1 Strongly Disagree (SD)	2 Disagree (D)	3 Agree (A)	4 Strongly Agree (SA)	Mean Rating
<p>c. Don't get along together very well.</p> <p><i>* Safe School Climate Domain</i> <i>** Note: This question has been altered for this report so that the answer reflects the true value of other questions within the report. A disagreement with this question is a positive answer and would skew the total value of the domain.</i></p>	122	19 15.6%	91 74.6%	9 7.4%	3 2.5%	3.03
<p>d. Just look out for themselves.</p> <p><i>* Safe School Climate Domain</i> <i>** Note: This question has been altered for this report so that the answer reflects the true value of other questions within the report. A disagreement with this question is a positive answer and would skew the total value of the domain.</i></p>	122	16 13.1%	73 59.8%	27 22.1%	6 4.9%	2.81
<p>e. Treat each other with respect.</p> <p><i>* Safe School Climate Domain</i></p>	122	3 2.5%	31 25.4%	85 69.7%	3 2.5%	2.72
<p>f. Stop and think before doing anything when they get angry.</p> <p><i>* Social Emotional Learning Domain</i></p>	122	5 4.1%	62 50.8%	53 43.4%	2 1.6%	2.43

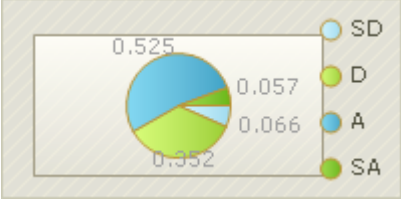
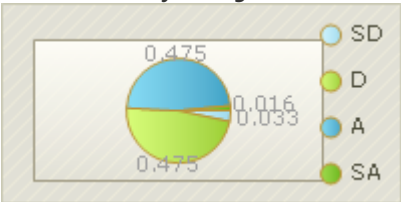
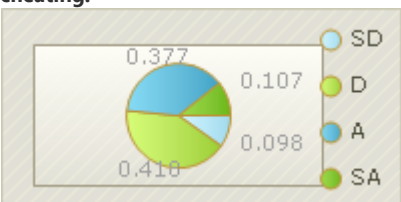
Staff Detail Report

Question	Total Answers	1 Strongly Disagree (SD)	2 Disagree (D)	3 Agree (A)	4 Strongly Agree (SA)	Mean Rating
<p>g. Do their share of the work when doing group projects.</p> <p><i>* Social Emotional Learning Domain</i></p>	122	3 2.5%	38 31.1%	75 61.5%	6 4.9%	2.69
<p>h. Give up when they can't solve a problem easily.</p> <p><i>* Social Emotional Learning Domain</i> ** Note: This question has been altered for this report so that the answer reflects the true value of other questions within the report. A disagreement with this question is a positive answer and would skew the total value of the domain.</p>	122	3 2.5%	41 33.6%	67 54.9%	11 9.0%	2.30
<p>i. Get into arguments when they disagree with people.</p> <p><i>* Social Emotional Learning Domain</i> ** Note: This question has been altered for this report so that the answer reflects the true value of other questions within the report. A disagreement with this question is a positive answer and would skew the total value of the domain.</p>	122	4 3.3%	55 45.1%	57 46.7%	6 4.9%	2.47

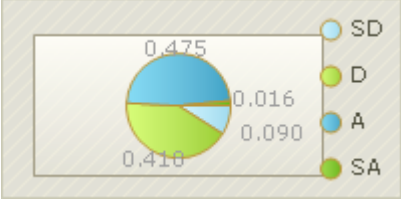
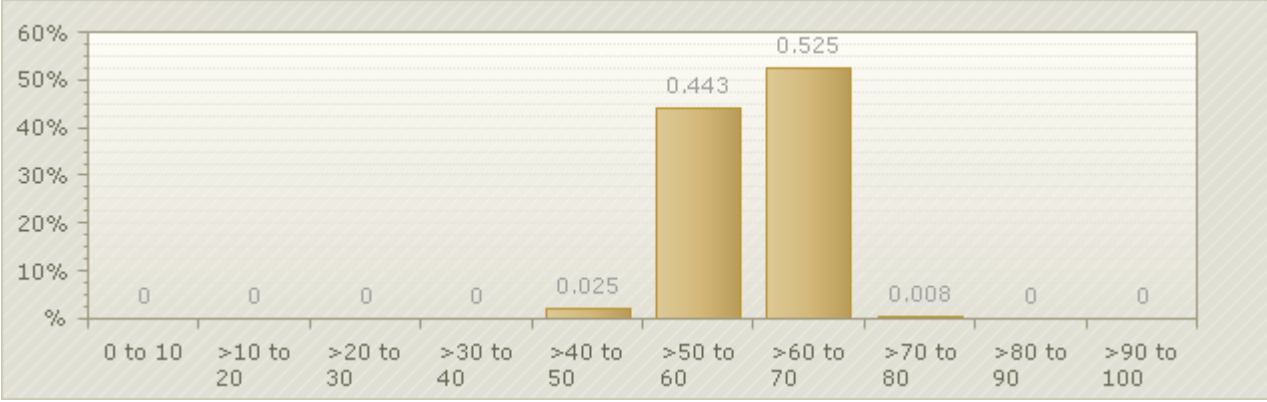
Staff Detail Report

Question	Total Answers	1 Strongly Disagree (SD)	2 Disagree (D)	3 Agree (A)	4 Strongly Agree (SA)	Mean Rating
<p>j. Do their best, even when their school work is difficult.</p> <p><i>* Social Emotional Learning Domain</i></p>	122	8 6.6%	47 38.5%	62 50.8%	5 4.1%	2.52
<p>k. Think it's OK to fight if someone insults them.</p> <p><i>* Social Emotional Learning Domain</i></p> <p>** Note: This question has been altered for this report so that the answer reflects the true value of other questions within the report. A disagreement with this question is a positive answer and would skew the total value of the domain.</p>	122	15 12.3%	69 56.6%	36 29.5%	2 1.6%	2.80
<p>l. Do all their homework.</p> <p><i>* Social Emotional Learning Domain</i></p>	122	20 16.4%	53 43.4%	43 35.2%	6 4.9%	2.29

Staff Detail Report

Question	Total Answers	1 Strongly Disagree (SD)	2 Disagree (D)	3 Agree (A)	4 Strongly Agree (SA)	Mean Rating
<p>m. Say mean things to other students when they think the other students deserve it.</p>  <p>* Social Emotional Learning Domain ** Note: This question has been altered for this report so that the answer reflects the true value of other questions within the report. A disagreement with this question is a positive answer and would skew the total value of the domain.</p>	122	8 6.6%	43 35.2%	64 52.5%	7 5.7%	2.43
<p>n. Try to work out their disagreements with other students by talking to them.</p>  <p>* Social Emotional Learning Domain</p>	122	4 3.3%	58 47.5%	58 47.5%	2 1.6%	2.48
<p>o. Think it's OK to cheat if other students are cheating.</p>  <p>* Social Emotional Learning Domain ** Note: This question has been altered for this report so that the answer reflects the true value of other questions within the report. A disagreement with this question is a positive answer and would skew the total value of the domain.</p>	122	12 9.8%	51 41.8%	46 37.7%	13 10.7%	2.51


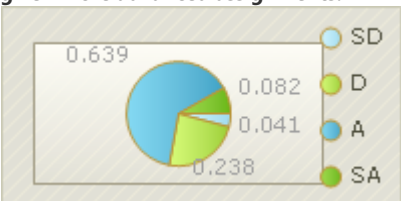
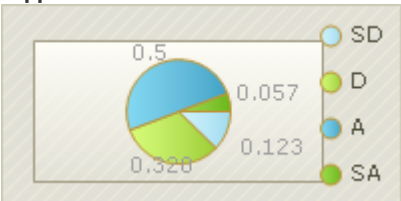
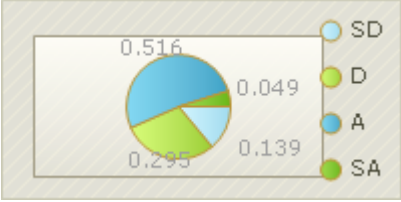
Staff Detail Report

Question	Total Answers	1 Strongly Disagree (SD)	2 Disagree (D)	3 Agree (A)	4 Strongly Agree (SA)	Mean Rating
<p>p. Try to do a good job on school work even when it is not interesting.</p> 						
<p>* Social Emotional Learning Domain</p>	122	11 9.0%	51 41.8%	58 47.5%	2 1.6%	2.42
						
<p>Note: Each respondents collection of answers for the question set above are averaged and plotted into this graph to show how the scores are distributed across the entire collection of respondents. In this specific set '0 to 10' would relate to 'Strongly Disagree' and '>90 to 100' would relate to 'Strongly Agree'.</p>						

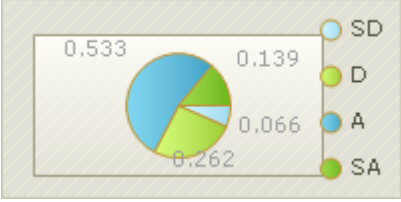
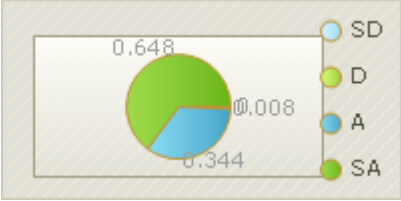
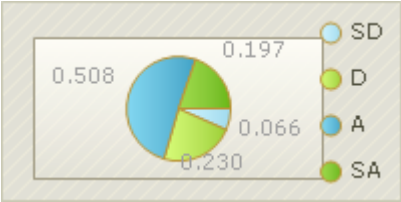

Staff Detail Report

Question	Total Answers	1 Strongly Disagree (SD)	2 Disagree (D)	3 Agree (A)	4 Strongly Agree (SA)	Mean Rating
4. How much do you agree with the following?:						
<p>a. The principal asks students about their ideas.</p>  <p><i>* Student Support Domain</i></p>	122	8 6.6%	39 32.0%	63 51.6%	12 9.8%	2.65
<p>b. Students and parents receive effective communication about academic progress.</p>  <p><i>* Student Support Domain</i></p>	122	3 2.5%	13 10.7%	72 59.0%	34 27.9%	3.12
<p>c. When students break rules, they are treated fairly.</p>  <p><i>* Student Support Domain</i></p>	122	13 10.7%	29 23.8%	72 59.0%	8 6.6%	2.61
How much do you agree with the following?:						
<p>d. I am happy working at this school.</p>  <p><i>* High Expectations/Academic/Challenge Domain</i></p>	122	6 4.9%	15 12.3%	75 61.5%	26 21.3%	2.99

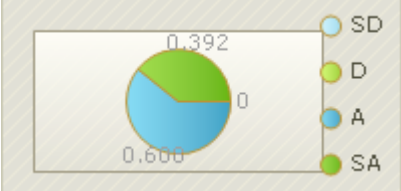
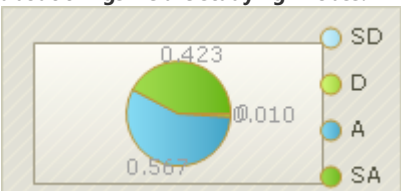
Staff Detail Report

Question	Total Answers	1 Strongly Disagree (SD)	2 Disagree (D)	3 Agree (A)	4 Strongly Agree (SA)	Mean Rating
<p>e. This school is making steady progress implementing rigorous academic standards.</p>  <p><i>* High Expectations/Academic/Challenge Domain</i></p>	122	3 2.5%	21 17.2%	73 59.8%	25 20.5%	2.98
<p>f. When students in this school already know the material that is being taught, they are given more advanced assignments.</p>  <p><i>* High Expectations/Academic Rigor/Challenge Domain</i></p>	122	5 4.1%	29 23.8%	78 63.9%	10 8.2%	2.76
<p>g. School staff members have a lot of informal opportunities to influence what happens here.</p>  <p><i>* Safe School Climate Domain</i></p>	122	15 12.3%	39 32.0%	61 50.0%	7 5.7%	2.49
<p>h. School Staff members are supported by administration.</p>  <p><i>* Safe School Climate Domain</i></p>	122	17 13.9%	36 29.5%	63 51.6%	6 4.9%	2.48

Staff Detail Report

Question	Total Answers	1 Strongly Disagree (SD)	2 Disagree (D)	3 Agree (A)	4 Strongly Agree (SA)	Mean Rating
<p>i. In this school, staff members have a "can do" attitude.</p>  <p><i>* High Expectations/Academic Rigor/Challenge Domain</i></p>	122	8 6.6%	32 26.2%	65 53.3%	17 13.9%	2.75
<p>j. Students have adequate access to computers at this school.</p>  <p><i>* High Expectations/Academic Rigor/Challenge Domain</i></p>	122	0 0.0%	1 0.8%	42 34.4%	79 64.8%	3.64
<p>k. Students in this school are encouraged to take advanced classes, such as honors, Advanced Placement (AP), or International Baccalaureate (IB), or classes that lead to professional certification.</p>  <p><i>* High Expectations/Academic Rigor/Challenge Domain</i></p>	122	8 6.6%	28 23.0%	62 50.8%	24 19.7%	2.84
<p>l. This school provides positive experiences for students.</p>  <p><i>* High Expectations/Academic Rigor/Challenge Domain</i></p>	122	4 3.3%	10 8.2%	75 61.5%	33 27.0%	3.12

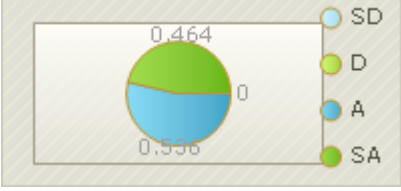
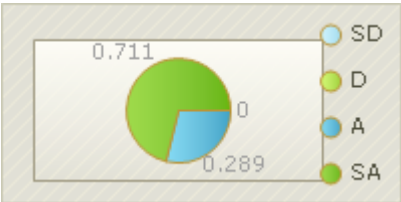
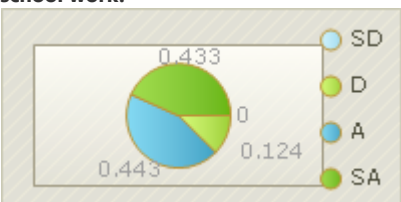
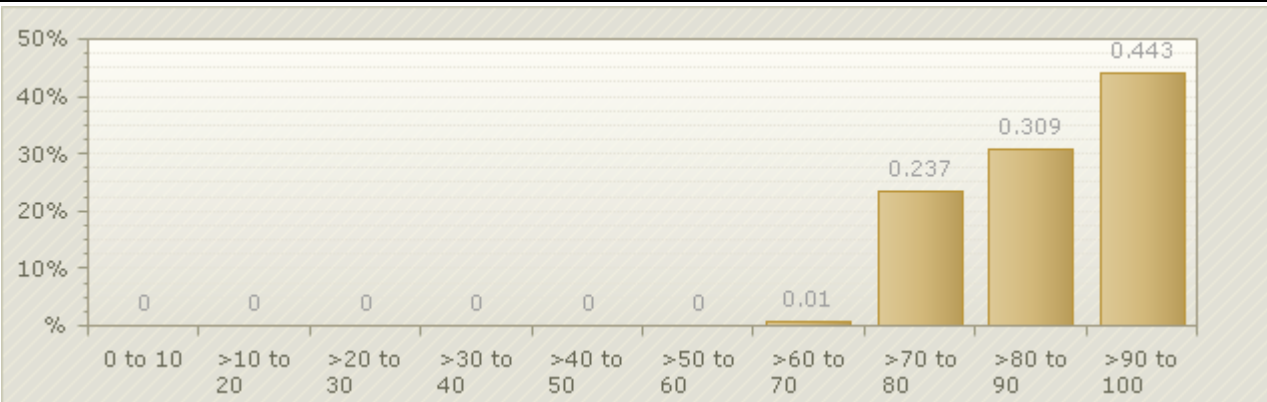
Staff Detail Report

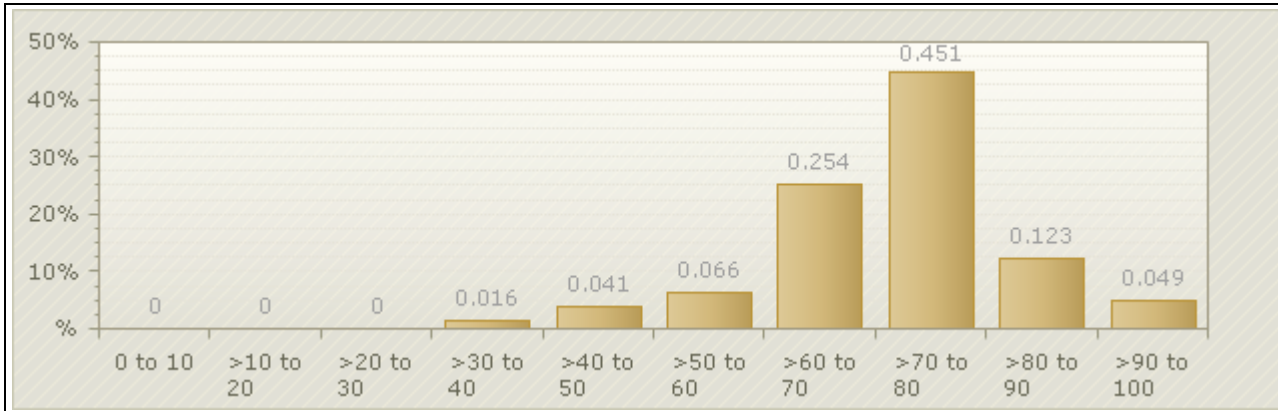
Question	Total Answers	1 Strongly Disagree (SD)	2 Disagree (D)	3 Agree (A)	4 Strongly Agree (SA)	Mean Rating
5. How much do you agree with the following statements about your teaching:						
<p>a. Work to connect what I am teaching to life outside the classroom.</p>  <p><i>* High Expectations/Academic/Challenge Domain</i></p>	97	0 0.0%	0 0.0%	59 60.8%	38 39.2%	3.39
<p>b. Encourage students to share their ideas about things we are studying in class.</p>  <p><i>* High Expectations/Academic/Challenge Domain</i></p>	97	0 0.0%	1 1.0%	55 56.7%	41 42.3%	3.41

Staff Detail Report

Question	Total Answers	1 Strongly Disagree (SD)	2 Disagree (D)	3 Agree (A)	4 Strongly Agree (SA)	Mean Rating
<p>c. Require my students to explain their answers.</p>  <p><i>* High Expectations/Academic/Challenge Domain</i></p>	97	0 0.0%	1 1.0%	51 52.6%	45 46.4%	3.45
<p>d. Prepare all students for success in the next grade, in college, or in a job.</p>  <p><i>* High Expectations/Academic/Challenge Domain</i></p>	97	0 0.0%	0 0.0%	53 54.6%	44 45.4%	3.45
<p>e. Really care about my students.</p>  <p><i>* Student Support Domain</i></p>	97	0 0.0%	1 1.0%	20 20.6%	76 78.4%	3.77
<p>f. Help my students make up work after an excused absence.</p>  <p><i>* Student Support Domain</i></p>	97	1 1.0%	2 2.1%	48 49.5%	46 47.4%	3.43

Staff Detail Report

Question	Total Answers	1 Strongly Disagree (SD)	2 Disagree (D)	3 Agree (A)	4 Strongly Agree (SA)	Mean Rating
<p>g. Give my students feedback on class assignments that helps improve their work.</p>  <p><i>* Student Support Domain</i></p>	97	0 0.0%	0 0.0%	52 53.6%	45 46.4%	3.46
<p>h. Provide accommodations to students who need them.</p>  <p><i>* Student Support Domain</i></p>	97	0 0.0%	0 0.0%	28 28.9%	69 71.1%	3.71
<p>i. Believe all students can do challenging school work.</p>  <p><i>* High Expectations/Academic/Challenge Domain</i></p>	97	0 0.0%	12 12.4%	43 44.3%	42 43.3%	3.31
						
<p>Note: Each respondents collection of answers for the question set above are averaged and plotted into this graph to show how the scores are distributed across the entire collection of respondents. In this specific set '0 to 10' would relate to 'Strongly Disagree' and '>90 to 100' would relate to 'Strongly Agree'.</p>						

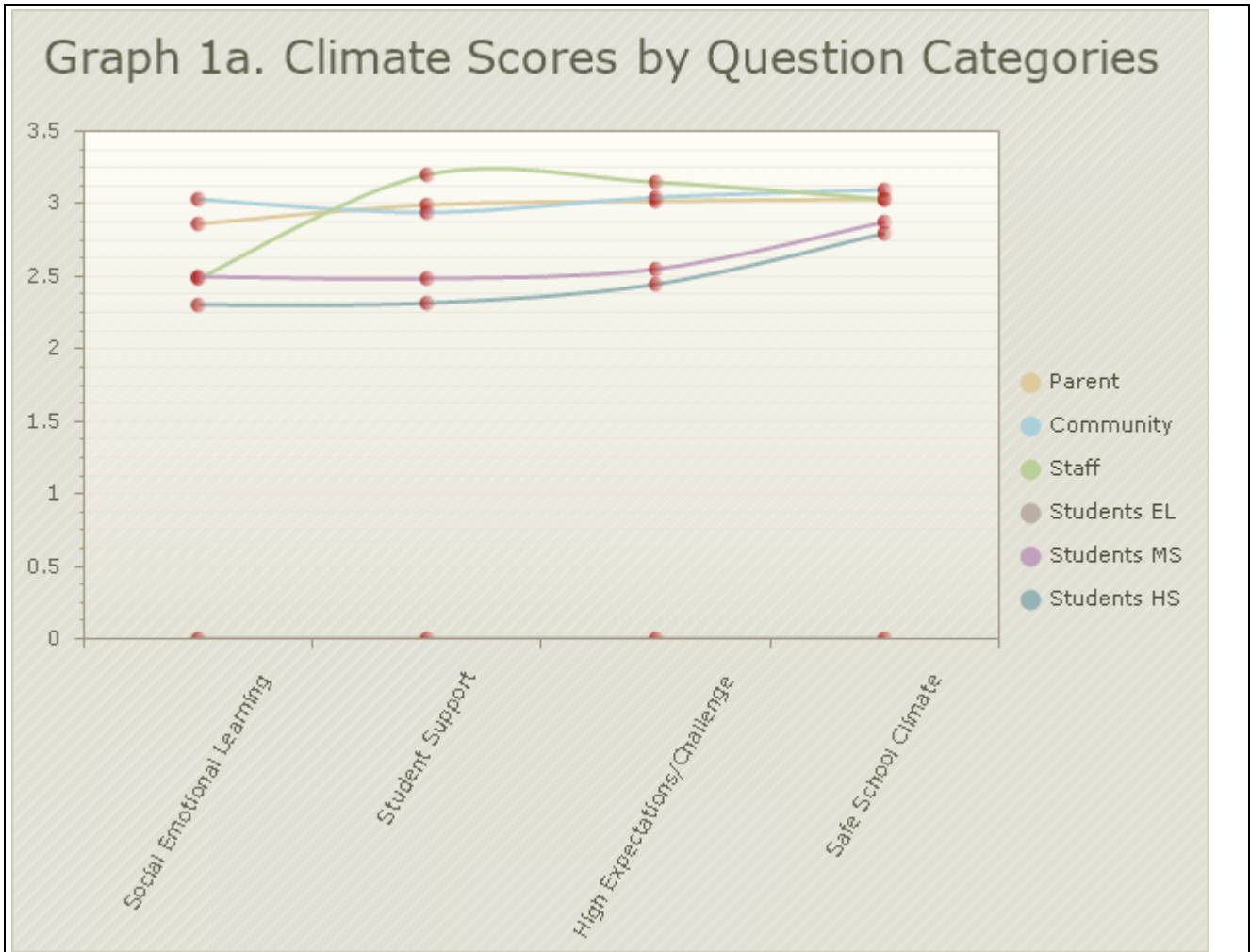


Note: Each respondents collection of answers for the question set above are averaged and plotted into this graph to show how the scores are distributed across the entire collection of respondents. In this specific set '0 to 10' would relate to 'Strongly Disagree' and '>90 to 100' would relate to 'Strongly Agree'.

Safeschools Reference Data

	Academic	Conduct	Drug & Alcohol	Tobacco	Violence	Weapon
Out of School Suspensions	0	26	2	0	4	3
Expulsions	0	0	0	0	0	2
Truancy Rate	4.48%					

Staff Detail Report



Added/Custom Questions	
Question	Results
Student in my school are treated equally regardless of their race, socioeconomic status, ethnicity or culture.	
Yes	99 81.1%
Uncertain	16 13.1%
No	7 5.7%
The adult workplace climate is very positive.	
Yes	37 30.3%
No	49 40.2%
Uncertain	36 29.5%