

Student High Detail Report

Date of Survey: 2018-12-01 To 2019-02-28

Report Level: Data for LEA - Deer Lakes SD

Total Number of Respondents: 315 Filtered Count: 315

[print](#)

TABLE 1	
Agreeable to... (GREEN) 3.4 and above Contradiction to... (Red) 2.5 and below	
a. Total Average School Climate Score	2.47
b. Social Emotional Learning Average Domain Score	2.30
c. Student Support Average Domain Score	2.32
d. High Expectations/Academic/Challenge Average Domain Score	2.44
e. Safe School Climate Average Domain Score	2.80

Question	Results
Rank how safe you believe your high school is because of the school police officer.	
My school is just as safe as before the police/SRO came to our school	119 39.0%
My school is somewhat safer than before the police/SRO came to our school	136 44.6%
My school is much safer than before the police/SRO came to our school	50 16.4%
Think about your class schedule on Monday this week. Which one of the following classes did you have closest to lunch but before lunch?	
English/Language Arts	60 19.0%
Foreign Language	20 6.3%
Mathematics	67 21.3%
Science	54 17.1%
Social Studies	72 22.9%
Not Applicable	42 13.3%

Question	Results
We have a police officer/school resource officer (SRO) in our school:	
Yes	305 96.8%
No	8 2.5%
Not Applicable	2 0.6%
The school police officer/school resource officer helps to make our school a safer place.	
Yes	255 83.6%
No	50 16.4%

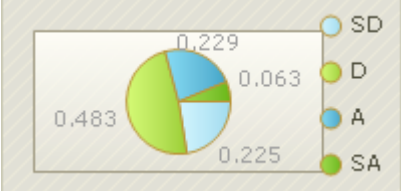
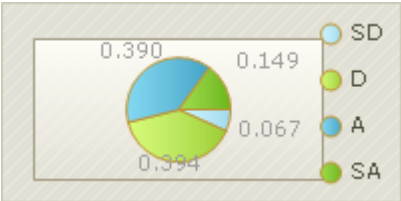
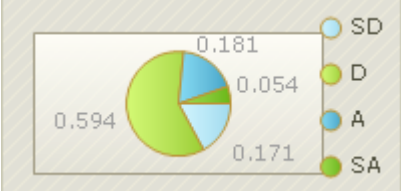
Student High Detail Report

Question	Results
What grade are you currently enrolled this school year?	
6th Grade	0 0.0%
7th Grade	0 0.0%
8th Grade	0 0.0%
9th Grade	119 37.8%
10th Grade	89 28.3%
11th Grade	51 16.2%
12th Grade	56 17.8%
Which category best describes your Gender?	
Female	160 50.8%
Male	155 49.2%

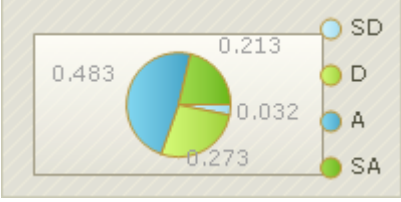
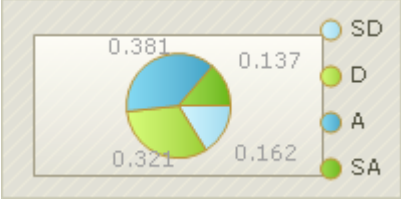
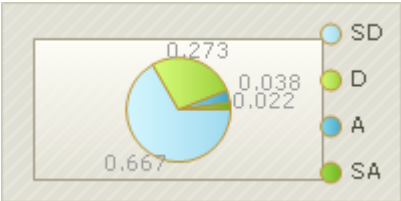
Question	Results
Select the one or more from the categories provided that best match.	
American Indian/Alaskan Native	6 1.8%
Black/African American	7 2.1%
Hispanic	8 2.4%
Multi-Racial	4 1.2%
White/Caucasian	287 87.5%
Asian	3 0.9%
Native Hawaiian or other Pacific Islander	1 0.3%
Unavailable/Unknown/Decline	12 3.7%

Notes:

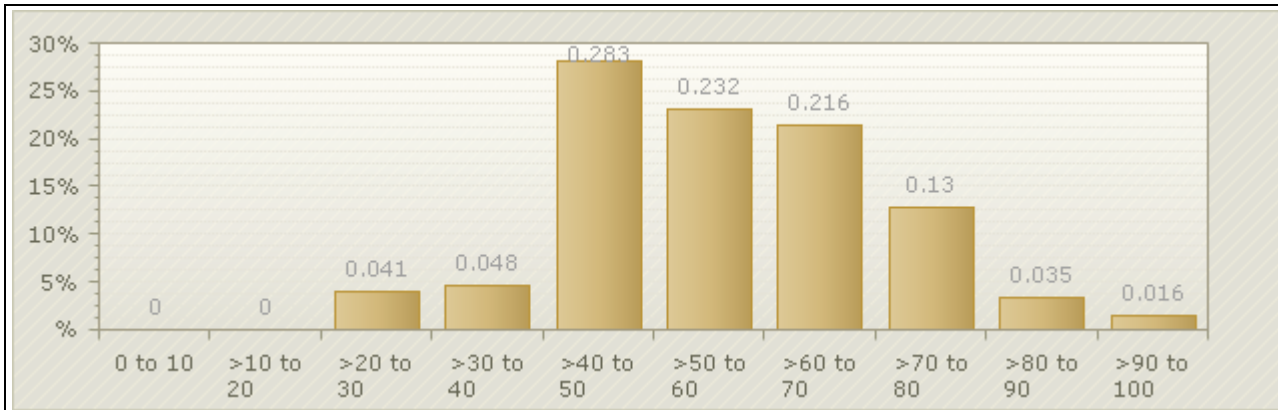
Student High Detail Report

Question	Total Answers	1 Strongly Disagree (SD)	2 Disagree (D)	3 Agree (A)	4 Strongly Agree (SA)	Mean Rating
1. How much do you agree with the following statements about your school:						
<p>a. I worry about crime and violence in school.</p>  <p><i>* Safe School Climate Domain</i> ** Note: This question has been altered for this report so that the answer reflects the true value of other questions within the report. A disagreement with this question is a positive answer and would skew the total value of the domain.</p>	315	71 22.5%	152 48.3%	72 22.9%	20 6.3%	2.87
<p>b. Students at this school are often bullied.</p>  <p><i>* Safe School Climate Domain</i> ** Note: This question has been altered for this report so that the answer reflects the true value of other questions within the report. A disagreement with this question is a positive answer and would skew the total value of the domain.</p>	315	21 6.7%	124 39.4%	123 39.0%	47 14.9%	2.38
<p>c. Students at this school are often threatened.</p>  <p><i>* Safe School Climate Domain</i> ** Note: This question has been altered for this report so that the answer reflects the true value of other questions within the report. A disagreement with this question is a positive answer and would skew the total value of the domain.</p>	315	54 17.1%	187 59.4%	57 18.1%	17 5.4%	2.88

Student High Detail Report

Question	Total Answers	1 Strongly Disagree (SD)	2 Disagree (D)	3 Agree (A)	4 Strongly Agree (SA)	Mean Rating
<p>d. Students at this school are often teased or picked on.</p>  <p>* Safe School Climate Domain ** Note: This question has been altered for this report so that the answer reflects the true value of other questions within the report. A disagreement with this question is a positive answer and would skew the total value of the domain.</p>	315	10 3.2%	86 27.3%	152 48.3%	67 21.3%	2.12
<p>e. Students at this school are often bullied because of certain characteristics (ex: race, religion, or weight).</p>  <p>* Safe School Climate Domain ** Note: This question has been altered for this report so that the answer reflects the true value of other questions within the report. A disagreement with this question is a positive answer and would skew the total value of the domain.</p>	315	51 16.2%	101 32.1%	120 38.1%	43 13.7%	2.51
<p>f. I sometimes stay home because I don't feel safe at school.</p>  <p>* Safe School Climate Domain ** Note: This question has been altered for this report so that the answer reflects the true value of other questions within the report. A disagreement with this question is a positive answer and would skew the total value of the domain.</p>	315	210 66.7%	86 27.3%	12 3.8%	7 2.2%	3.58

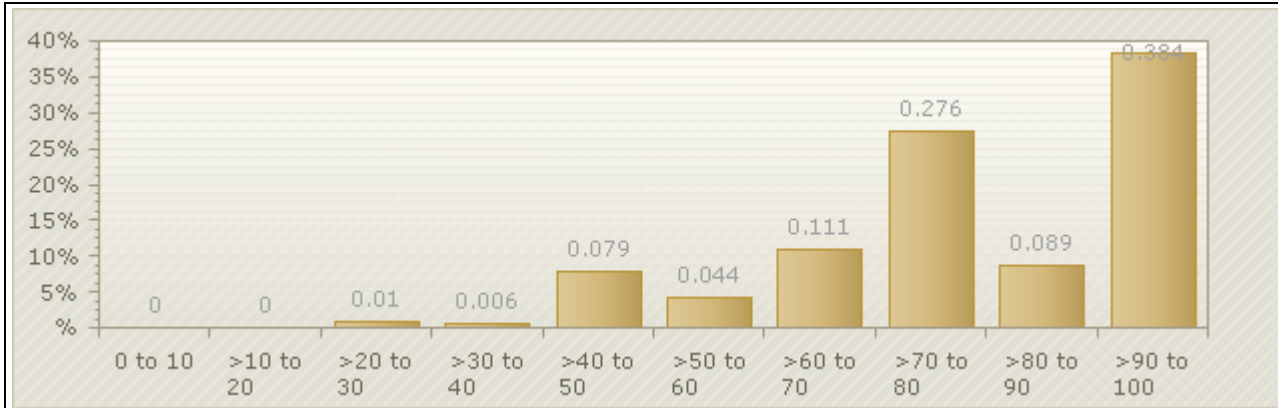
Student High Detail Report



Note: Each respondents collection of answers for the question set above are averaged and plotted into this graph to show how the scores are distributed across the entire collection of respondents. In this specific set '0 to 10' would relate to 'Strongly Disagree' and '>90 to 100' would relate to 'Strongly Agree'.

Question	Total Answers	1 Not Safe (NS)	2 Somewhat Safe (SS)	3 Mostly Safe (MS)	4 Very Safe (VS)	Mean Rating
2. How safe do you feel:						
a. Outside around the school.						
<i>* Safe School Climate Domain</i>	315	8 2.5%	48 15.2%	147 46.7%	112 35.6%	3.15
b. In the hallways and bathrooms of the school.						
<i>* Safe School Climate Domain</i>	315	16 5.1%	54 17.1%	131 41.6%	114 36.2%	3.09
c. In your classes.						
<i>* Safe School Climate Domain</i>	315	5 1.6%	29 9.2%	127 40.3%	154 48.9%	3.37

Student High Detail Report



Note: Each respondents collection of answers for the question set above are averaged and plotted into this graph to show how the scores are distributed across the entire collection of respondents. In this specific set '0 to 10' would relate to 'Not Safe' and '>90 to 100' would relate to 'Very Safe'.

Question	Total Answers	1 Strongly Disagree (SD)	2 Disagree (D)	3 Agree (A)	4 Strongly Agree (SA)	Mean Rating
3. How much do you agree with the following statements about students in your school:						
<p>a. Don't really care about each other.</p> <p><i>* Safe School Climate Domain</i> ** Note: This question has been altered for this report so that the answer reflects the true value of other questions within the report. A disagreement with this question is a positive answer and would skew the total value of the domain.</p>	315	35 11.1%	152 48.3%	107 34.0%	21 6.7%	2.64
<p>b. Like to put others down.</p> <p><i>* Safe School Climate Domain</i> ** Note: This question has been altered for this report so that the answer reflects the true value of other questions within the report. A disagreement with this question is a positive answer and would skew the total value of the domain.</p>	315	50 15.9%	146 46.3%	103 32.7%	16 5.1%	2.73

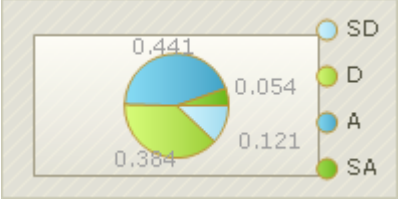
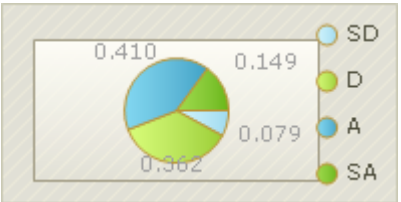
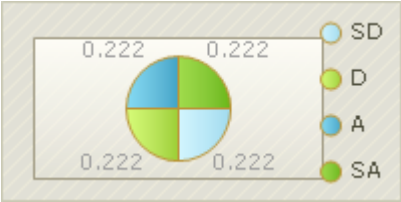
Student High Detail Report

Question	Total Answers	1 Strongly Disagree (SD)	2 Disagree (D)	3 Agree (A)	4 Strongly Agree (SA)	Mean Rating
<p>c. Don't get along together well.</p> <p><i>* Safe School Climate Domain</i> ** Note: This question has been altered for this report so that the answer reflects the true value of other questions within the report. A disagreement with this question is a positive answer and would skew the total value of the domain.</p>	315	33 10.5%	182 57.8%	84 26.7%	16 5.1%	2.74
<p>d. Just look out for themselves.</p> <p><i>* Safe School Climate Domain</i> ** Note: This question has been altered for this report so that the answer reflects the true value of other questions within the report. A disagreement with this question is a positive answer and would skew the total value of the domain.</p>	315	22 7.0%	130 41.3%	131 41.6%	32 10.2%	2.45
<p>e. Treat each other with respect.</p> <p><i>* Safe School Climate Domain</i></p>	315	18 5.7%	106 33.7%	163 51.7%	28 8.9%	2.64
<p>f. Stop and think before doing anything when they get angry.</p> <p><i>* Social Emotional Learning Domain</i></p>	315	52 16.5%	172 54.6%	77 24.4%	14 4.4%	2.17

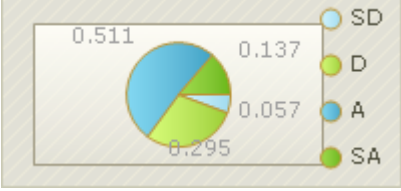
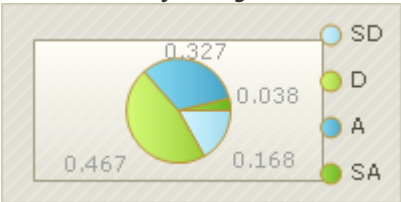
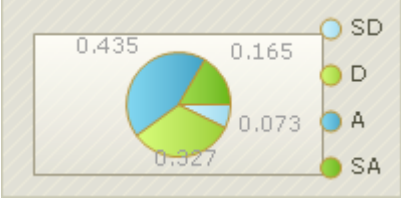
Student High Detail Report

Question	Total Answers	1 Strongly Disagree (SD)	2 Disagree (D)	3 Agree (A)	4 Strongly Agree (SA)	Mean Rating
<p>g. Do their share of the work when we have group projects.</p> <p><i>* Social Emotional Learning Domain</i></p>	315	46 14.6%	105 33.3%	149 47.3%	15 4.8%	2.42
<p>h. Give up when they can't solve a problem easily.</p> <p><i>* Social Emotional Learning Domain</i> ** Note: This question has been altered for this report so that the answer reflects the true value of other questions within the report. A disagreement with this question is a positive answer and would skew the total value of the domain.</p>	315	22 7.0%	142 45.1%	124 39.4%	27 8.6%	2.50
<p>i. Get into arguments when they disagree with people.</p> <p><i>* Social Emotional Learning Domain</i> ** Note: This question has been altered for this report so that the answer reflects the true value of other questions within the report. A disagreement with this question is a positive answer and would skew the total value of the domain.</p>	315	16 5.1%	73 23.2%	172 54.6%	54 17.1%	2.16

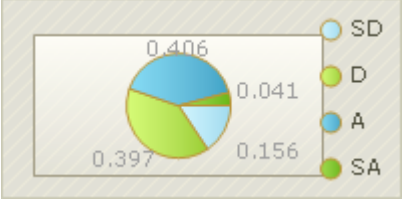
Student High Detail Report

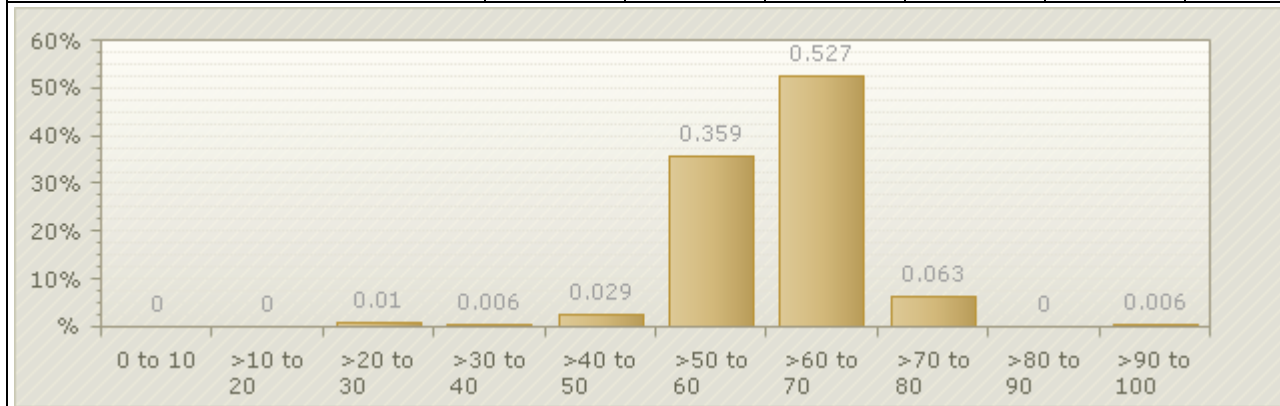
Question	Total Answers	1 Strongly Disagree (SD)	2 Disagree (D)	3 Agree (A)	4 Strongly Agree (SA)	Mean Rating
<p>j. Do their best, even when their school work is difficult.</p>  <p>* Social Emotional Learning Domain</p>	315	38 12.1%	121 38.4%	139 44.1%	17 5.4%	2.43
<p>k. Think it's OK to fight if someone insults them.</p>  <p>* Social Emotional Learning Domain ** Note: This question has been altered for this report so that the answer reflects the true value of other questions within the report. A disagreement with this question is a positive answer and would skew the total value of the domain.</p>	315	25 7.9%	114 36.2%	129 41.0%	47 14.9%	2.37
<p>l. Do all their homework.</p>  <p>* Social Emotional Learning Domain</p>	315	70 22.2%	166 52.7%	68 21.6%	11 3.5%	2.06

Student High Detail Report

Question	Total Answers	1 Strongly Disagree (SD)	2 Disagree (D)	3 Agree (A)	4 Strongly Agree (SA)	Mean Rating
<p>m. Say mean things to other students when they think the other students deserve it.</p>  <p>* Social Emotional Learning Domain ** Note: This question has been altered for this report so that the answer reflects the true value of other questions within the report. A disagreement with this question is a positive answer and would skew the total value of the domain.</p>	315	18 5.7%	93 29.5%	161 51.1%	43 13.7%	2.27
<p>n. Try to work out their disagreements with other students by talking to them.</p>  <p>* Social Emotional Learning Domain</p>	315	53 16.8%	147 46.7%	103 32.7%	12 3.8%	2.23
<p>o. Think it's OK to cheat if other students are cheating.</p>  <p>* Social Emotional Learning Domain ** Note: This question has been altered for this report so that the answer reflects the true value of other questions within the report. A disagreement with this question is a positive answer and would skew the total value of the domain.</p>	315	23 7.3%	103 32.7%	137 43.5%	52 16.5%	2.31

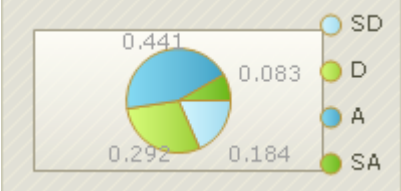
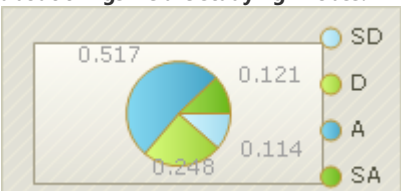
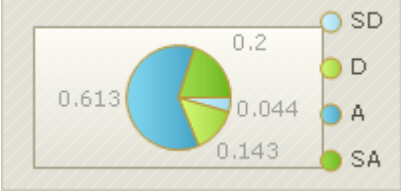
Student High Detail Report

Question	Total Answers	1 Strongly Disagree (SD)	2 Disagree (D)	3 Agree (A)	4 Strongly Agree (SA)	Mean Rating
<p>p. Try to do a good job on school work even when it is not interesting.</p> 						
* Social Emotional Learning Domain	315	49 15.6%	125 39.7%	128 40.6%	13 4.1%	2.33

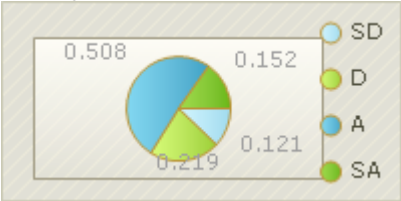
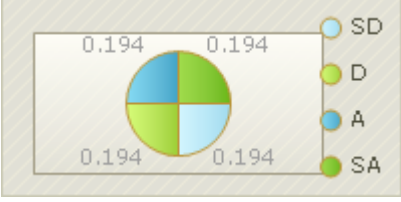
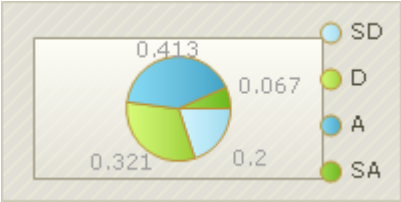
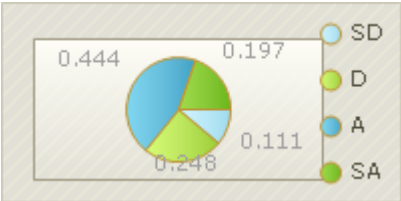


Note: Each respondents collection of answers for the question set above are averaged and plotted into this graph to show how the scores are distributed across the entire collection of respondents. In this specific set '0 to 10' would relate to 'Strongly Disagree' and '>90 to 100' would relate to 'Strongly Agree'.

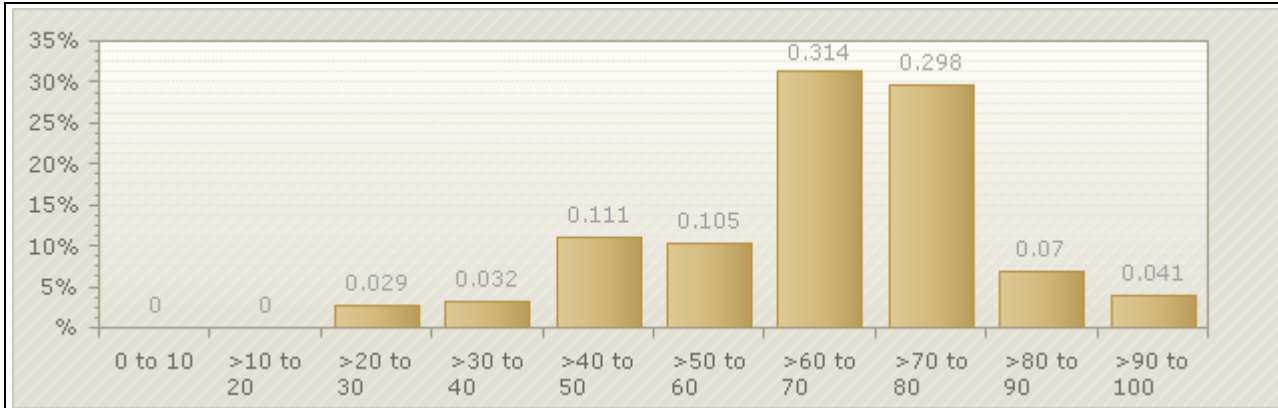
Student High Detail Report

Question	Total Answers	1 Strongly Disagree (SD)	2 Disagree (D)	3 Agree (A)	4 Strongly Agree (SA)	Mean Rating
4. How much do you agree with the following statements about your teachers:						
<p>a. Often connect what I am learning to life outside the classroom.</p>  <p><i>* High Expectations/Academic Rigor/Challenge Domain</i></p>	315	58 18.4%	92 29.2%	139 44.1%	26 8.3%	2.42
<p>b. Encourage students to share their ideas about things we are studying in class.</p>  <p><i>* High Expectations/Academic Rigor/Challenge Domain</i></p>	315	36 11.4%	78 24.8%	163 51.7%	38 12.1%	2.64
<p>c. Often require me to explain my answers.</p>  <p><i>* High Expectations/Academic Rigor/Challenge Domain</i></p>	315	14 4.4%	45 14.3%	193 61.3%	63 20.0%	2.97

Student High Detail Report

Question	Total Answers	1 Strongly Disagree (SD)	2 Disagree (D)	3 Agree (A)	4 Strongly Agree (SA)	Mean Rating
<p>d. Really care about me.</p>  <p><i>* Student Support Domain</i></p>	315	38 12.1%	69 21.9%	160 50.8%	48 15.2%	2.69
<p>e. Help me make up work after an excused absence.</p>  <p><i>* Student Support Domain</i></p>	315	61 19.4%	77 24.4%	142 45.1%	35 11.1%	2.48
<p>f. Often assign homework that helps me learn.</p>  <p><i>* High Expectations/Academic Rigor/Challenge Domain</i></p>	315	63 20.0%	101 32.1%	130 41.3%	21 6.7%	2.35
<p>g. Think all students can do challenging school work.</p>  <p><i>* High Expectations/Academic Rigor/Challenge Domain</i></p>	315	35 11.1%	78 24.8%	140 44.4%	62 19.7%	2.73

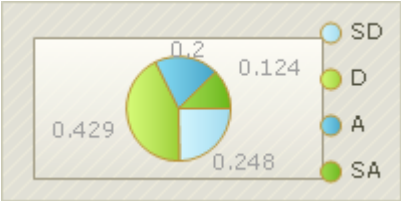
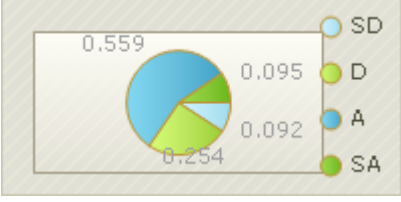
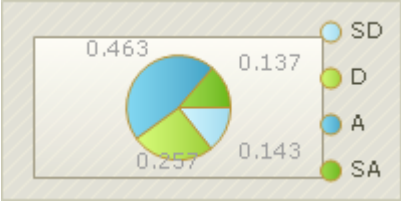
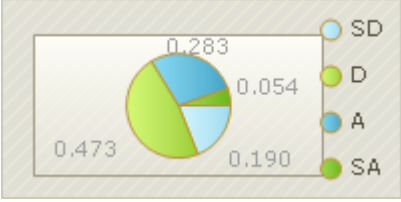
Student High Detail Report



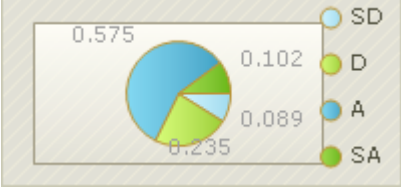
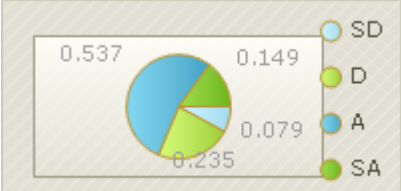
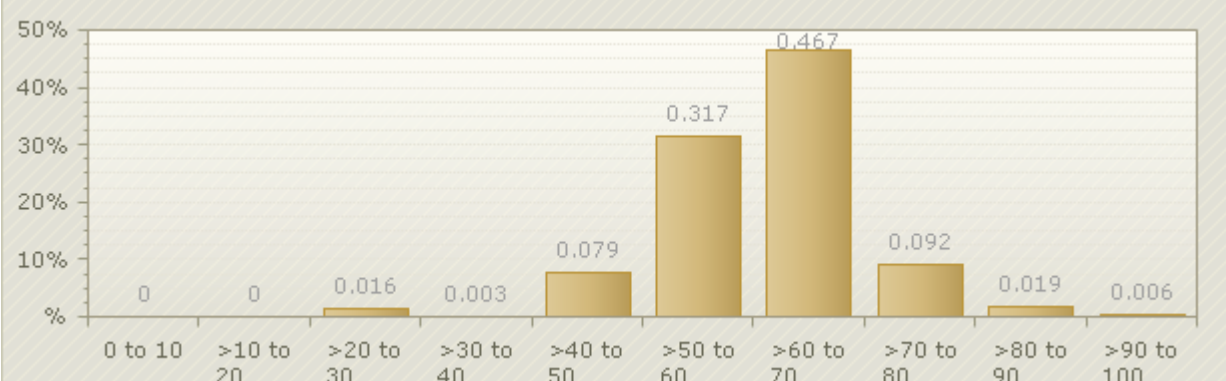
Note: Each respondents collection of answers for the question set above are averaged and plotted into this graph to show how the scores are distributed across the entire collection of respondents. In this specific set '0 to 10' would relate to 'Strongly Disagree' and '>90 to 100' would relate to 'Strongly Agree'.

Question	Total Answers	1 Strongly Disagree (SD)	2 Disagree (D)	3 Agree (A)	4 Strongly Agree (SA)	Mean Rating
5. How much do you agree with the following:						
<p>a. Adults in this school are often too busy to give students extra help.</p> <p><i>* Student Support Domain</i> ** Note: This question has been altered for this report so that the answer reflects the true value of other questions within the report. A disagreement with this question is a positive answer and would skew the total value of the domain.</p>	315	31 9.8%	156 49.5%	92 29.2%	36 11.4%	2.58
<p>b. Adults in this school apply the same rules to all students equally.</p> <p><i>* Student Support Domain</i></p>	315	66 21.0%	129 41.0%	93 29.5%	27 8.6%	2.26

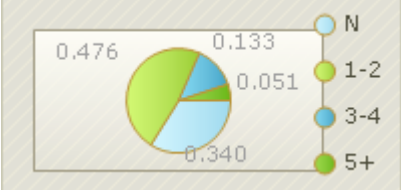
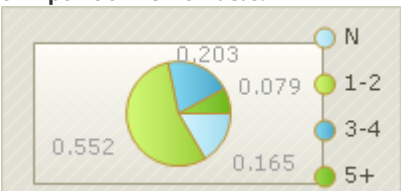
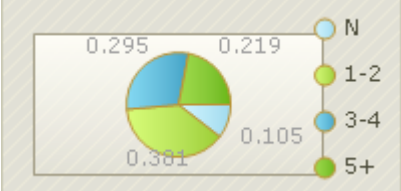
Student High Detail Report

Question	Total Answers	1 Strongly Disagree (SD)	2 Disagree (D)	3 Agree (A)	4 Strongly Agree (SA)	Mean Rating
<p>c. I wish I went to a different school.</p>  <p>* Student Support Domain ** Note: This question has been altered for this report so that the answer reflects the true value of other questions within the report. A disagreement with this question is a positive answer and would skew the total value of the domain.</p>	315	78 24.8%	135 42.9%	63 20.0%	39 12.4%	2.80
<p>d. I can get extra help at school outside of my regular classes.</p>  <p>* Student Support Domain</p>	315	29 9.2%	80 25.4%	176 55.9%	30 9.5%	2.66
<p>e. A counselor at this school has helped me plan for life after high school.</p>  <p>* Student Support Domain</p>	315	45 14.3%	81 25.7%	146 46.3%	43 13.7%	2.59
<p>f. When students in this school already know the material that is being taught, the teacher gives them more advanced assignments.</p>  <p>* High Expectations/Academic Rigor/Challenge Domain</p>	315	60 19.0%	149 47.3%	89 28.3%	17 5.4%	2.20

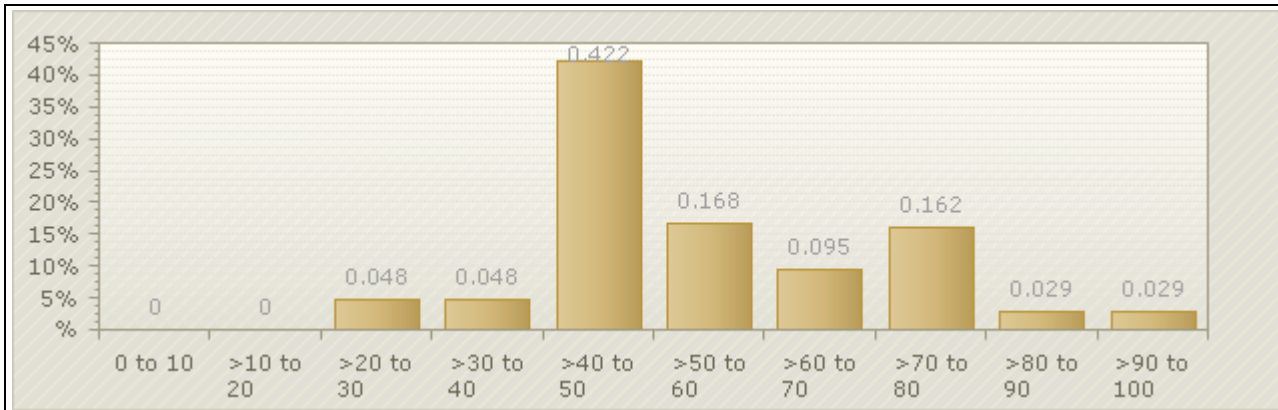
Student High Detail Report

Question	Total Answers	1 Strongly Disagree (SD)	2 Disagree (D)	3 Agree (A)	4 Strongly Agree (SA)	Mean Rating
<p>g. Adults in this school are usually willing to take the time to give students extra help.</p>  <p><i>* Student Support Domain</i></p>	315	28 8.9%	74 23.5%	181 57.5%	32 10.2%	2.69
<p>h. Students at this school are expected to learn challenging math material to get them ready for graduation.</p>  <p><i>* High Expectations/Academic Rigor/Challenge Domain</i></p>	315	25 7.9%	74 23.5%	169 53.7%	47 14.9%	2.76
 <p>Note: Each respondents collection of answers for the question set above are averaged and plotted into this graph to show how the scores are distributed across the entire collection of respondents. In this specific set '0 to 10' would relate to 'Strongly Disagree' and '>90 to 100' would relate to 'Strongly Agree'.</p>						

Student High Detail Report

Question	Total Answers	1 Never (N)	2 1 or 2 times (1-2)	3 3 or 4 times (3-4)	4 5 or more times (5+)	Mean Rating
6. Please indicate how often you have done the following this school year:						
<p>a. Write a research paper of 5 or more pages.</p>  <p><i>* High Expectations/Academic Rigor/Challenge Domain</i></p>	315	107 34.0%	150 47.6%	42 13.3%	16 5.1%	1.90
<p>b. Write a paper in which you defended your own point of view or ideas.</p>  <p><i>* High Expectations/Academic Rigor/Challenge Domain</i></p>	315	52 16.5%	174 55.2%	64 20.3%	25 7.9%	2.20
<p>c. Make a formal presentation to a class about something you read or researched.</p>  <p><i>* High Expectations/Academic Rigor/Challenge Domain</i></p>	315	33 10.5%	120 38.1%	93 29.5%	69 21.9%	2.63

Student High Detail Report



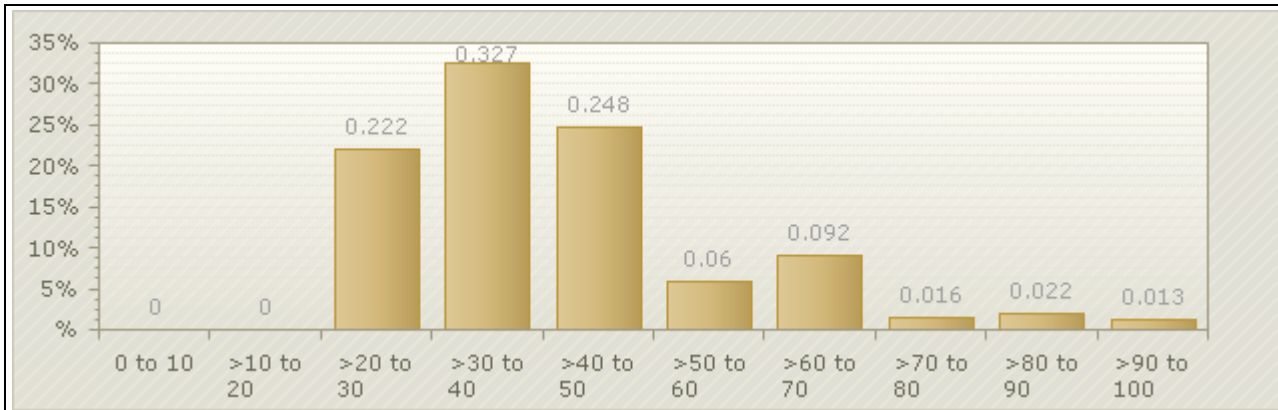
Note: Each respondents collection of answers for the question set above are averaged and plotted into this graph to show how the scores are distributed across the entire collection of respondents. In this specific set '0 to 10' would relate to 'Never' and '>90 to 100' would relate to '5+'.

Question	Total Answers	1 Never (N)	2 1 or 2 times (1- 2)	3 3 or 4 times (3- 4)	4 5 or more times (5+)	Mean Rating
7. Please indicate how often you have done the following this school year:						
a. Talked to a teacher about a problem you were having in class.						
* Student Support Domain	315	126 40.0%	131 41.6%	36 11.4%	22 7.0%	1.85

Student High Detail Report

Question	Total Answers	1 Never (N)	2 1 or 2 times (1-2)	3 3 or 4 times (3-4)	4 5 or more times (5+)	Mean Rating
<p>b. Talked to an adult at school about something that was bothering you.</p> <p><i>* Student Support Domain</i></p>	315	184 58.4%	94 29.8%	21 6.7%	16 5.1%	1.58
<p>c. Talked to an adult at school about something outside of school that is important to you.</p> <p><i>* Student Support Domain</i></p>	315	181 57.5%	81 25.7%	23 7.3%	30 9.5%	1.69
<p>d. Talked to a counselor at school in depth about planning for college.</p> <p><i>* Student Support Domain</i></p>	315	196 62.2%	77 24.4%	27 8.6%	15 4.8%	1.56

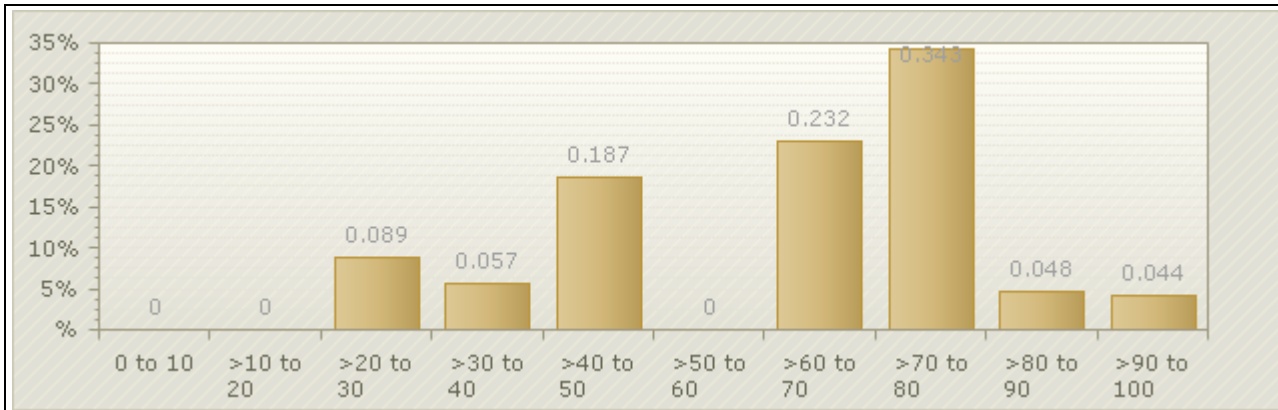
Student High Detail Report



Note: Each respondents collection of answers for the question set above are averaged and plotted into this graph to show how the scores are distributed across the entire collection of respondents. In this specific set '0 to 10' would relate to 'Strongly Disagree' and '>90 to 100' would relate to 'Strongly Agree'.

Question	Total Answers	1 Strongly Disagree (SD)	2 Disagree (D)	3 Agree (A)	4 Strongly Agree (SA)	Mean Rating
8. How much do you agree with the following statements about your teachers:						
a. Notice if I have trouble learning something. 						
<i>* Student Support Domain</i>	315	45 14.3%	92 29.2%	156 49.5%	22 7.0%	2.49
b. Will help me improve my work if I do poorly on an assignment. 						
<i>* Student Support Domain</i>	315	43 13.7%	93 29.5%	154 48.9%	25 7.9%	2.51

Student High Detail Report

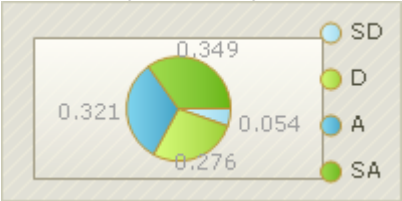


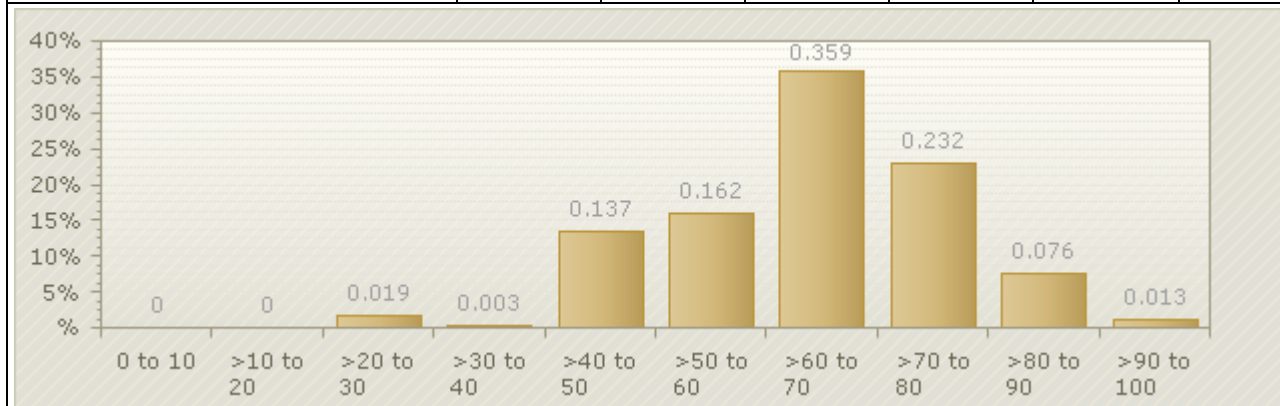
Note: Each respondents collection of answers for the question set above are averaged and plotted into this graph to show how the scores are distributed across the entire collection of respondents. In this specific set '0 to 10' would relate to 'Strongly Disagree' and '>90 to 100' would relate to 'Strongly Agree'.

9. How much do you agree with the following statements about your classes:

Statement	SD	D	A	SA	Average	
a. The topics we are studying are interesting and challenging. 						
* High Expectations/Academic Rigor/Challenge Domain	315	48 15.2%	130 41.3%	122 38.7%	15 4.8%	2.33
b. These classes really make me think. 						
* High Expectations/Academic Rigor/Challenge Domain	315	31 9.8%	95 30.2%	165 52.4%	24 7.6%	2.58

Student High Detail Report

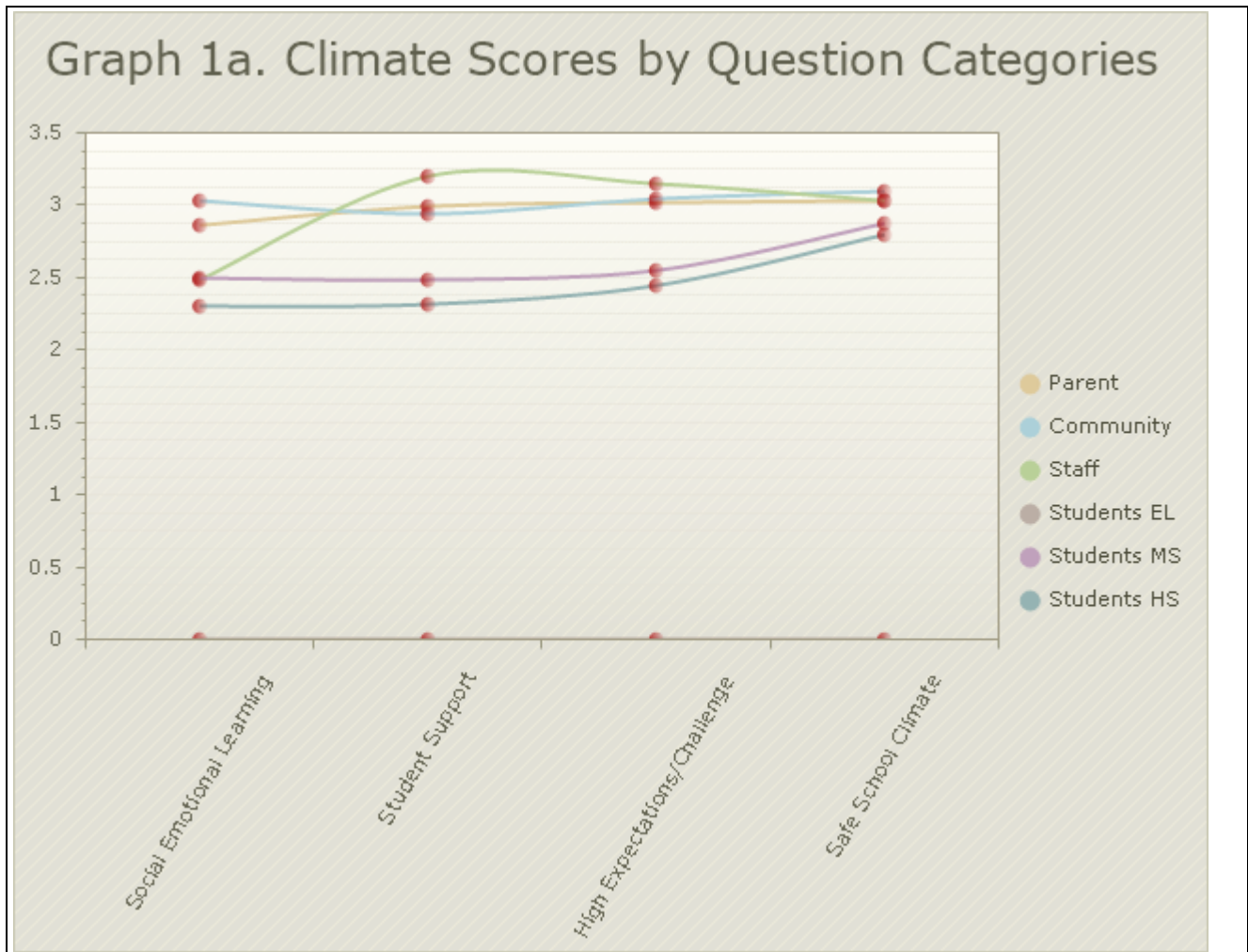
Question	Total Answers	1 Strongly Disagree (SD)	2 Disagree (D)	3 Agree (A)	4 Strongly Agree (SA)	Mean Rating
<p>c. I am usually bored in my classes.</p>  <p><i>* High Expectations/Academic Rigor/Challenge Domain</i> <i>** Note: This question has been altered for this report so that the answer reflects the true value of other questions within the report. A disagreement with this question is a positive answer and would skew the total value of the domain.</i></p>	315	17 5.4%	87 27.6%	101 32.1%	110 34.9%	2.03



Note: Each respondents collection of answers for the question set above are averaged and plotted into this graph to show how the scores are distributed across the entire collection of respondents. In this specific set '0 to 10' would relate to 'Strongly Disagree' and '>90 to 100' would relate to 'Strongly Agree'.

Safeschools Reference Data						
	Academic	Conduct	Drug & Alcohol	Tobacco	Violence	Weapon
Out of School Suspensions	0	26	2	0	4	3
Expulsions	0	0	0	0	0	2
Truancy Rate	4.48%					

Student High Detail Report



Added/Custom Questions	
Question	Results
My class lessons include examples of my racial, ethnic, or cultural background.	
No	190 60.3%
Yes	125 39.7%
I have been disrespected by an adult at this school because of my race, ethnicity, or culture.	
No	279 88.6%
Yes	36 11.4%
There is a lot of tension in this school between people of different cultures, races, or ethnicities.	
No	249 79%
Yes	66 21%
Most students at my school invite others to join in games and activities.	
No	79 25.1%

Yes	100 31.7%
Uncertain	136 43.2%
Most students at my school make new students feel welcomed.	
No	62 19.7%
Uncertain	105 33.3%
Yes	148 47%
Adults in my school follow through when I report a problem.	
No	101 32.1%
Uncertain	155 49.2%
Yes	59 18.7%
Adults in my school get involved to help stop or solve student conflicts.	
No	73 23.2%
Uncertain	117 37.1%
Yes	125 39.7%
My school provides students with opportunities to get involved in improving school climate.	
No	69 21.9%
Uncertain	98 31.1%
Yes	148 47%
I feel I have a voice in my school concerning how to improve school climate.	
No	137 43.5%
Uncertain	99 31.4%
Yes	79 25.1%